



PRODUCT CATALOG

DICA.

EVERYDAY EXCELLENCE SINCE 1988.

CONTENTS

[03] The DICA Story

[04] Customer Testimonials

[06] Safety Tech Pads

Light Duty

Medium Duty

Heavy Duty

Dunnage

Special Duty

[13] Customer Service

[14] Ground Cover Mats

AlturnaMATS

VersaMATS

[18] Wheel Chocks

Urethane Wheel Chocks

Rubber Wheel Chocks

[22] Product Disclaimer

THE DICA STORY

Our Mission is to improve the safety, stability and performance of people and their equipment.

DICA was founded in 1988 as a family business, with the name DICA created from the first two letters of the founder’s names, Dick and Carolyn Koberg. DICA initially represented multiple manufacturing companies, supplying fiberglass utility bodies, aerial buckets, small excavating equipment and electrical inverters to a variety of gas, electric and telecom utilities. All the while pursuing a request received from a fleet manager years earlier:

“Can you build me a better outrigger pad?”

At that time, there was a growing consensus that outrigger pads should be the foundation for the safe operation of equipment that required outriggers for stability. However, limited information was available regarding the ideal size, thickness or material for the safe use of outrigger pads. Additionally, most pads were created from wood materials or cable reel ends, without regard to ground conditions or needs of the equipment.

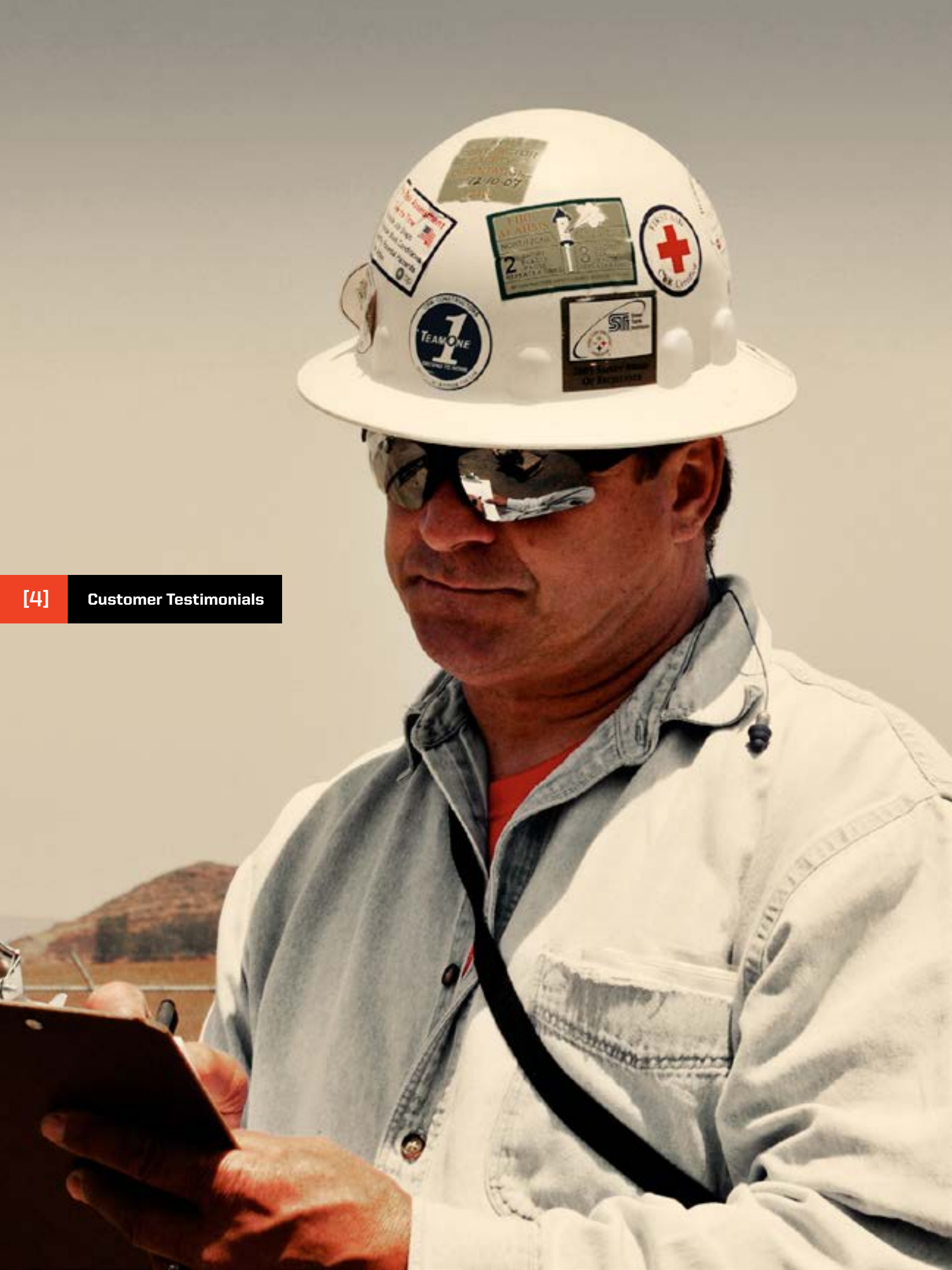
That being the case, DICA began developing an engineered lightweight pad through research and evaluation of outrigger required equipment and identifying superior materials for outrigger pads. We delivered our first of these pads in 1988 and we’ve been steadily improving our



materials and designs ever since. The history of these improvements has positioned DICA as the industry leader throughout North America for engineered thermoplastic outrigger pads.

Today we continue to serve our original customers and we’ve expanded to serve the construction, arborist, energy, government, concrete and RV industries with our full line of Safety Tech Outrigger Pads. We’re also proud to offer an outstanding line of products from our premier partners, AlturnaMATS and Checkers.

Whether you’re a long time customer or meeting us for the first time, we hope to serve you with outstanding products, friendly service and exceptional value.



Customer Testimonials



Put DICA to the test. Our customers did and here is what they said.

Testimony #114

"To say the very least, we love them. Your DICA Safety Tech Pads have been a welcome addition to our mobile crane fleet. The pads continue to perform as expected and advertised. Great product and very happy to have purchased them."

Kenny Blanchard, CF Industries

Testimony #208

"I have owned DICA outrigger pads for more than 10 years and a set of AlturnaMATS for about four years and they are fantastic products. Both products are tough and nearly bullet proof. These products are made in America by american workers and dealing with DICA over the years, has been a great experience."

John Hushagen, Seattle Tree Preservation

Testimony #424

"They are great, I wish we had bought them sooner. My guess is they are the last pads I will ever buy unless I buy an additional crane—they will last forever."

Dan Muffoletto, Custom Welding and Fabricating

Testimony #139

"In the Crane Industry, safety is everything. To use the proper matting is a must. The problem is, if it is too hard to use, it doesn't get used."

These are easy to use, so they get used."

Brent Hamblin, S&H Steel Co.

Testimony #348

"We are extremely happy with our DICA products as they are extremely durable, user friendly, and have become an integral component of safe outrigger setup here at Sutherland Concrete and A.J.'s Concrete Pumping."

Scott Sutherland, Sutherland Concrete

Testimony #276

"This is the best money we've spent all year."

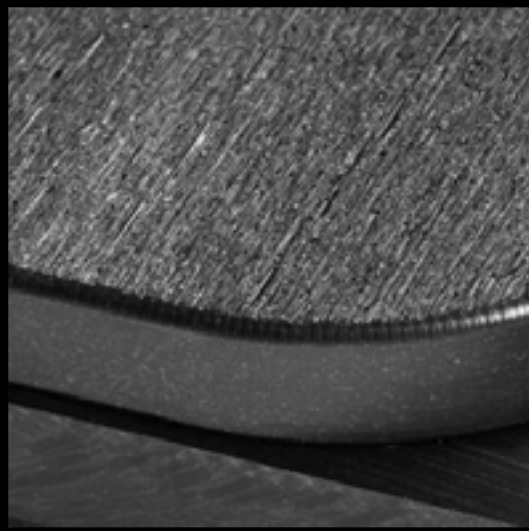
Jim Machan, Abilene High Lift Aerial



[6] Safety Tech Pads



DICA.
EVERYDAY
EXCELLENCE
SINCE 1988.



Safety Tech™ Outrigger Pads



Safety Tech Outrigger Pads deliver the safety, quality and performance you expect from the industry leader.

Why are they so good?

DICA Outrigger Pads have an engineered thermoplastic construction and come with industry leading features like safety texturing, radius edges and corners, and safety orange handles. Safety Tech Pads are also non-conductive, moisture and chemical resistant—making them easy to clean and maintain.

Safety Texturing

This non-slip surface provides increased traction between the outrigger foot and pad, as well as the pad to the ground surface. Safety Texturing is a standard feature on the entire line of Safety Tech Pads.

Lightweight

Safety Tech Pads have a superior strength-to-weight ratio over commonly used materials like wood or metal, providing exceptional ergonomic safety for operators and reliable set ups for your specialized equipment.

Memory Recovery

Safety Tech Pads are engineered to bend but never break. Depending on ground conditions, weight displacement and pad thickness, Safety Tech Pads may conform to the ground, but will return to their original shape once the load is removed.

Thickness

Safety Tech Pads are available in three standard thicknesses: Light Duty (.75"), Medium Duty (1.0") and Heavy Duty (2.0"). Safety Tech Pads can also be stacked for increased rigidity and height.

Lifetime Guarantee

If you break it, we'll replace it. Guaranteed. If you crack or break a Safety Tech Pad, we'll replace the pad along with free shipping and handling. This is the best outrigger pad warranty available and provides a lifetime of value.

Product Availability

Nearly every model Safety Tech Pad is in stock at any time and express shipping options are available upon request.

DICA Outrigger Pad Features

Safety Texturing, Memory Recovery and Lightweight.

DICA Lifetime Guarantee

If you break it, we'll replace it. Guaranteed.

Contact Us

800.610.3422 TOLL FREE www.dicausa.com WEB
641.755.4810 FAX info@dicausa.com EMAIL

Safety Tech Pads

LIGHT DUTY




PRODUCT STANDARDS

- Engineered Thermoplastic
- Safety Orange Handles
- 1 Person Carry
- Moisture and Chemical Resistant
- Non-Conductive
- Guaranteed for Life

.75" MODELS

	PRODUCT	(W X L X H)	SQ. IN.	WEIGHT
Ⓐ	D1212.75	12" X 12" X .75"	144	3.5 LBS
Ⓑ	D1515.75	15" X 15" X .75"	225	5.5 LBS
Ⓒ	D1818.75	18" X 18" X .75"	324	8.0 LBS

 See Page 22 for Product Disclaimer and Usage Information.

 For metric specifications, visit our product pages on www.dicausa.com

Handle Configuration
& Product Details



DICA Outrigger Pad Features
Safety Texturing, Memory Recovery
and Lightweight.

DICA Lifetime Guarantee
If you break it, we'll replace it.
Guaranteed.

Contact Us
800.610.3422 **TOLL FREE** www.dicausa.com **WEB**
641.755.4810 **FAX** info@dicausa.com **EMAIL**

Safety Tech Pads

MEDIUM DUTY




PRODUCT STANDARDS

- Engineered Thermoplastic
- Safety Orange Handles
- 1-2 Person Carry
- Moisture and Chemical Resistant
- Non-Conductive
- Guaranteed for Life

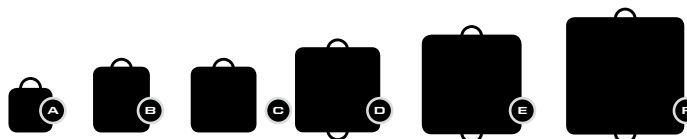
1.0" MODELS

PRODUCT	(W X L X H)	SQ. IN.	WEIGHT
A D1818	18" X 18" X 1"	324	10.0 LBS
B D2224	22" X 24" X 1"	528	17.0 LBS
C D2424	24" X 24" X 1"	576	18.0 LBS
D D3030	30" X 30" X 1"	900	28.0 LBS
E D3636	36" X 36" X 1"	1296	41.0 LBS
F D4848	48" X 48" X 1"	2304	72.0 LBS

 See Page 22 for Product Disclaimer and Usage Information.

 For metric specifications, visit our product pages on www.dicausa.com

Handle Configuration
& Product Details



DICA Outrigger Pad Features
Safety Texturing, Memory Recovery
and Lightweight.

DICA Lifetime Guarantee
If you break it, we'll replace it.
Guaranteed.

Contact Us
800.610.3422 TOLL FREE www.dicausa.com WEB
641.755.4810 FAX info@dicausa.com EMAIL

Safety Tech Pads

HEAVY DUTY



PRODUCT STANDARDS

- Engineered Thermoplastic
- Safety Orange Handles
- 1-4 Person Carry
- Moisture and Chemical Resistant
- Single Pad Rigidity up to 90 Tons
- Guaranteed for Life


2.0" MODELS

PRODUCT	(W X L X H)	SQ. IN.	WEIGHT
A D24242	24" X 24" X 2"	576	37 LBS
B D30302	30" X 30" X 2"	900	56 LBS
C D36362	36" X 36" X 2"	1296	82 LBS
D D48482	48" X 48" X 2"	2304	145 LBS

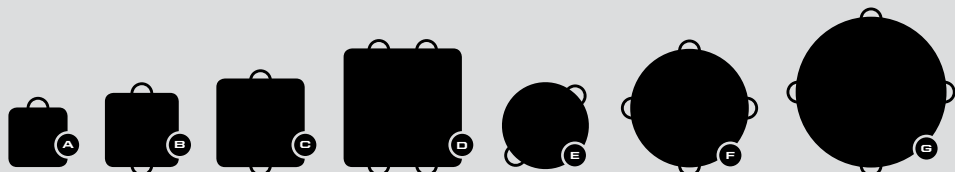
2.0" ROUND MODELS

PRODUCT	(DIAMETER X H)	SQ. IN.	WEIGHT
E DR362	36" X 2"	1017	70 LBS
F DR482	48" X 2"	1808	116 LBS
G DR602	60" X 2"	2826	190 LBS

 See Page 22 for Product Disclaimer and Usage Information.

 For metric specifications, visit our product pages on www.dicausa.com

Handle Configuration
& Product Details



DICA Outrigger Pad Features
Safety Texturing, Memory Recovery
and Lightweight.

DICA Lifetime Guarantee
If you break it, we'll replace it.
Guaranteed.

Contact Us
800.610.3422 TOLL FREE
641.755.4810 FAX
www.dicausa.com WEB
info@dicausa.com EMAIL

Safety Tech Pads DUNNAGE



PRODUCT STANDARDS

- Engineered Thermoplastic
- Safety Orange Handles
- 1-2 Person Carry
- Moisture and Chemical Resistant
- Lightweight Heavy Duty Option
- Guaranteed for Life


1.0" MODELS

PRODUCT	(W X L X H)	SQ. IN.	WEIGHT
A DUN2448	24" X 48" X 1"	1152	40 LBS

2.0" MODELS

PRODUCT	(W X L X H)	SQ. IN.	WEIGHT
B DUN12482	12" X 48" X 2"	576	40 LBS
C DUN18482	18" X 48" X 2"	864	60 LBS

 See Page 22 for Product Disclaimer and Usage Information.

 For metric specifications, visit our product pages on www.dicausa.com

Handle Configuration
& Product Details



DICA Outrigger Pad Features
Safety Texturing, Memory Recovery and Lightweight.

DICA Lifetime Guarantee
If you break it, we'll replace it. Guaranteed.

Contact Us
800.610.3422 TOLL FREE www.dicausa.com WEB
641.755.4810 FAX info@dicausa.com EMAIL

Safety Tech Pads

SPECIAL DUTY

PRODUCT STANDARDS

- Engineered Thermoplastic
- Rack Specific Sizes
- Cavity or Cleated Models
- Moisture and Chemical Resistant
- Safety Textured Surfaces
- Guaranteed for Life

1.0" MODELS

PRODUCT	(W X L X H)	SQ. IN.	WEIGHT
A D1428	14" X 28" X 1"	392	12 LBS
E D1824	18" X 24" X 1"	432	13 LBS

2.0" MODELS

PRODUCT	(W X L X H)	SQ. IN.	WEIGHT
E D15152	15" X 15" X 2"	225	14 LBS
E D18242	18" X 24" X 2"	432	26 LBS

1.0" CLEATED MODELS

PRODUCT	(W X L X H)	SQ. IN.	WEIGHT
E D1524CL	15" X 24" X 1"	360	12 LBS
F D1818CL	18" X 18" X 1"	324	11 LBS
E D2224CL	22" X 24" X 1"	528	18 LBS
H D2424CL	24" X 24" X 1"	576	19 LBS

1.5" CAVITY MODELS

PRODUCT	(W X L X H)	SQ. IN.	WEIGHT
I DC20201.5L	20" X 20" X 1.5"	400	13 LBS
J DC20201.5A	20" X 20" X 1.5"	400	13 LBS
K DC24241.5	24" X 24" X 1.5"	576	19 LBS



See Page 22 for Product Disclaimer and Usage Information.



For metric specifications, visit our product pages on www.dicausa.com

Handle Configuration
& Product Details



DICA Outrigger Pad Features
Safety Texturing, Memory Recovery
and Lightweight.

DICA Lifetime Guarantee
If you break it, we'll replace it.
Guaranteed.

Contact Us
800.610.3422 TOLL FREE www.dicausa.com WEB
641.755.4810 FAX info@dicausa.com EMAIL

DICA
Customer Service

**MAKE YOUR
PLASTIC
FANTASTIC**

Contact Team DICA Today

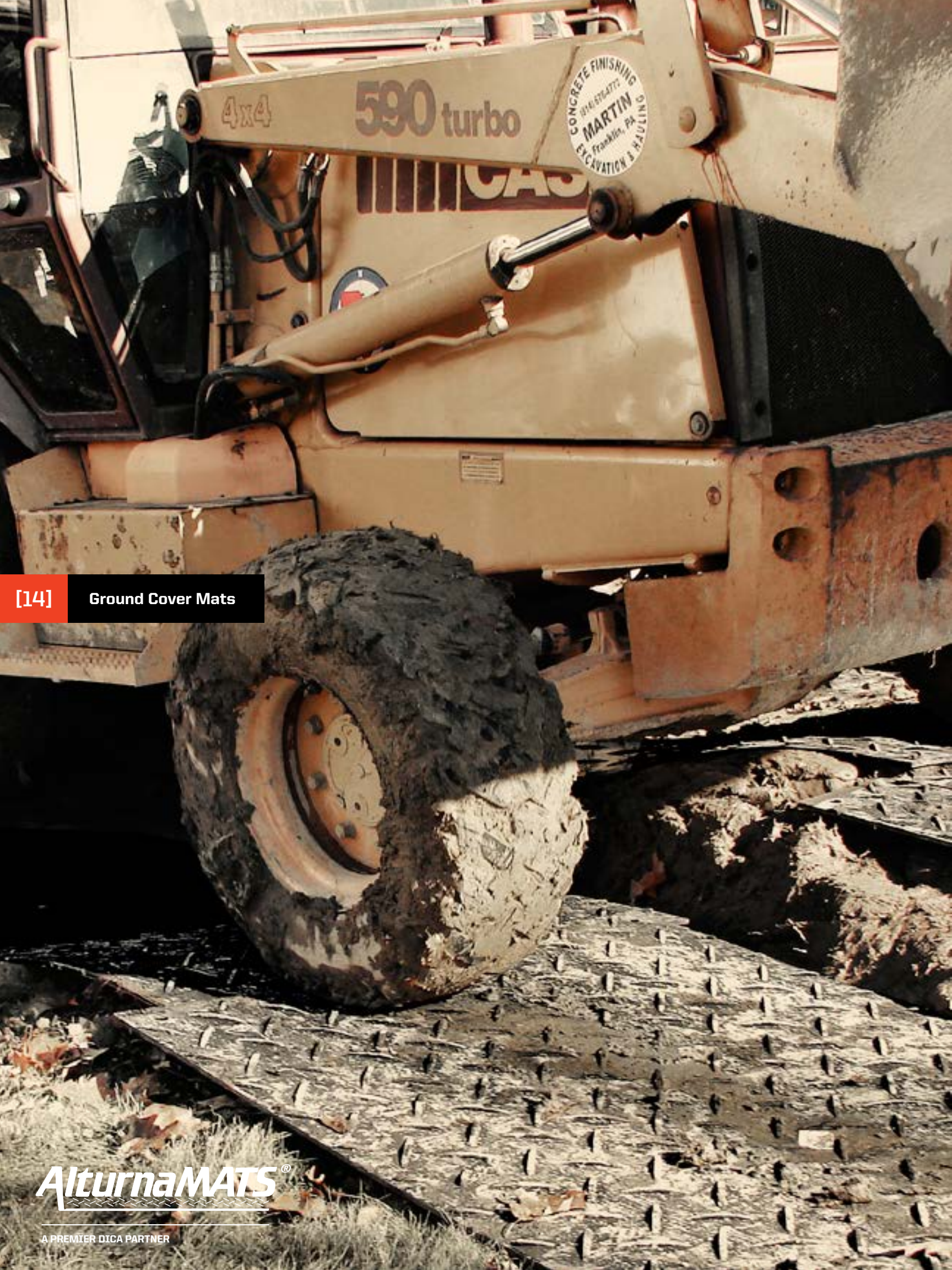
Toll Free: 800.610.3422

Direct: 641.755.4904

Email: info@dicausa.com

Web: www.dicausa.com

Business Hours: M-F 8am-5pm Central



[14]

Ground Cover Mats

AlturnaMATS®

A PREMIER DICA PARTNER

Ground Protection Mats



AlturnaMATS® provide exceptional traction, ground protection and lasting value for your business.

AlturnaMATS are the original ground protection mat developed for vehicle traffic over grassy, muddy and sensitive areas. Use AlturnaMATS to virtually

eliminate getting stuck and avoid the expensive replacement of plywood sheets or turf damage repair, while maintaining solid traction.

AlturnaMATS and VersaMATS Features

DURABILITY

AlturnaMATS and VersaMATS are virtually indestructible and able to easily handle equipment weighing up to 60 tons, in wet or dry conditions.

TRACTION AND STABILITY

AlturnaMATS feature a diamond plate tread design on both sides and can be ordered standard (Std), smooth on one side (S1), or smooth on both sides (S2), for specialized applications.

VersaMATS feature a flat, slip-resistant tread design on one side and the AlturnaMATS diamond plate tread design on the opposite, allowing for combined pedestrian and equipment use. VersaMATS can be ordered standard (Std), or smooth one side (S1), to protect sensitive surfaces.

COLOR

AlturnaMATS and VersaMATS are available in black or white colors providing a professional appearance that is easy to clean and maintain.

ACCESSORIES

Handi-Hooks are the easy way to move AlturnaMats around the job site. These three foot long, solid steel, "T" handled tools provide you with the safest and most efficient way to move your mats.

Turn-A-Links create an instant portable roadway or working platform by securely linking your mats together. Ideal when working in harsh conditions or when the job requires several days to complete. Available in round or flat galvanized steel models.

WARRANTY

AlturnaMATS and VersaMATS are backed by a Limited Lifetime Warranty from defect in material or craftsmanship, providing exceptional value.

PRODUCT AVAILABILITY

When you need it fast, DICA delivers. Nearly every model of AlturnaMATS and VersaMATS is in stock at any time. Express shipping options available upon request.

Ground Cover ALTURNAMATS



PRODUCT STANDARDS

- Diamond Plate Tread Design
- Vehicle Weights up to 60 Tons
- Six Year Warranty
- Limited Lifetime Warranty

ALTURNAMATS

PRODUCT	(W X L)	WEIGHT	COLOR	STD	S1	S2
A AM24	24" X 48"	21.5 LBS	● ○	●	●	●
B AM26	24" X 72"	32.25 LBS	● ○	●	●	●
C AM28	24" X 96"	42.0 LBS	● ○	●	●	●
D AM36	36" X 72"	51.0 LBS	●	●	●	●
E AM38	36" X 96"	64.5 LBS	● ○	●	●	●
F AM48	48" X 96"	86.0 LBS	● ○	●	●	●

Tread Options STD = Tread on both sides S1 = Smooth on one side S2 = Smooth on both sides

See Page 22 for Product Disclaimer and Usage Information.

For metric specifications, visit our product pages on www.dicausa.com

Product Details



Ground Protection Mats
Turf Protection, Traction and Durability.

Limited Lifetime Warranty
Free from defect in material or craftsmanship.

Contact Us
800.610.3422 **TOLL FREE** www.dicausa.com **WEB**
641.755.4810 **FAX** info@dicausa.com **EMAIL**

Ground Cover

VERSAMATS



PRODUCT STANDARDS

- Slip-Resistant Tread Design
- Vehicle Weights up to 60 Tons
- Six Year Warranty
- Limited Lifetime Warranty

VERSAMATS

	PRODUCT	(W X L)	WEIGHT	COLOR	STD	S1
A	VM28	24" X 96"	42.0 LBS	●	●	●
B	VM38	36" X 96"	64.5 LBS	● ○	●	●
C	VM48	48" X 96"	86.0 LBS	● ○	●	●

Tread Options STD = Tread on both sides S1 = Smooth on one side: No AlturnaMATS diamond tread plate design

See Page 22 for Product Disclaimer and Usage Information.

For metric specifications, visit our product pages on www.dicausa.com

Product Details



DICAUSA **Product Features** **Lifetime Warranty**
Safety Texting Recovery Free for desktop, mobile or tablet use.
and Digital. or Chat.

Contact Us
800.610.3422 **TOLL FREE** www.dicausa.com **WEB**
641.755.4810 **FAX** info@dicausa.com **EMAIL**



[18]

Wheel Chocks

CHECKERS[®]
INDUSTRIAL SAFETY PRODUCTS, INC.

A PREMIER DICA PARTNER



Checkers® Wheel Chocks

Checkers industrial wheel chocks provide the safety and durability solution commercial fleets need.

Checkers Industrial Wheel Chocks

Checkers Wheel Chocks provide a safe and easy way to secure vehicles, trucks, and trailers in residential,

commercial and industrial applications. These durable wheel chocks are made from either rubber or urethane and are offered in a variety of styles and models.

Checkers Industrial Wheel Chock Features

DURABILITY

Checkers wheel chocks are exceptionally durable due to the quality of material and innovative design. Whether made of urethane or recycled rubber, all chocks are resistant to UV, moisture, salts and oils. For maximum protection against crushing, solid models are available.

SAFETY

Checkers wheel chocks will not cause tire or pavement damage. Both urethane and recycled rubber models come with a traction design that safely grips both tires and road. Urethane chocks come in safety orange and have how to use guidelines molded into each chock.

PLACEMENT

Checkers wheel chocks are easily placed into position using their steel loop or molded handles providing a solid grip for placement of chocks. Pre-drilled mounting holes are available on other models and allow for easy attachment of rope or chain handles.

STORAGE

Checkers wheel chocks provide industrial chock size, support and durability, yet easily fit into most industrial storage compartments. Storage racks made of rust resistant zinc-plated steel are also available for all urethane wheel chocks, allowing for their easy accessibility and secure storage.

WARRANTY

Checkers wheel chocks come with a full one-year warranty from defect in material or craftsmanship providing exceptional value in a professionally designed and manufactured chock.

PRODUCT AVAILABILITY

When you need it fast, DICA delivers. Nearly every model wheel chock is in stock at any time. Express shipping options available upon request.

High Features
Safe, Durable, Easy to Use, and Recovery
Easy to Lift.

Full Warranty
Free of Defect in Material or
Craftsmanship for one year.

Contact Us
800.610.3422 TOLL FREE www.dicausa.com WEB
641.755.4810 FAX info@dicausa.com EMAIL

Roadblocks WHEEL CHOCKS

PRODUCT STANDARDS

- Tough Urethane Construction
- Oil and Chemical Resistant
- Recessed or Molded Handle
- Mounting Holes for Chains or Cables



1700 SERIES MODEL

Autos, Trailers & Small Utility Trucks

PRODUCT	(W X L X H)	WEIGHT
UC-1700	7.5" X 8.5" X 6.25"	2.0 LBS



VERTICAL MOUNTING BRACKET

1700 SERIES MOUNTING BRACKETS - ZINC PLATED

PRODUCT	ORIENTATION	WEIGHT
UC-17VM	VERTICAL	2.0 LBS



1500 SERIES MODEL

OTR Trucks & Trailers

PRODUCT	(W X L X H)	WEIGHT
UC-1500-4.5	7.75" X 11.0" X 8.0"	4.5 LBS
UC-1500-6	7.75" X 11.0" X 8.0"	6.0 LBS



VERTICAL MOUNTING BRACKET



HORIZONTAL MOUNTING BRACKET

1500 SERIES MOUNTING BRACKETS - ZINC PLATED

PRODUCT	ORIENTATION	WEIGHT
UC-15VM	VERTICAL	2.5 LBS
UC-15HM	HORIZONTAL	2.75 LBS



1400 SERIES MODEL

Utilities & Telephone Fleets

PRODUCT	(W X L X H)	WEIGHT
UC-1400-4.5	8.5" X 10.0" X 5.0"	4.5 LBS
UC-1400-6	8.5" X 10.0" X 5.0"	6.0 LBS



VERTICAL MOUNTING BRACKET



HORIZONTAL MOUNTING BRACKET

1400 SERIES MOUNTING BRACKETS - ZINC PLATED

PRODUCT	ORIENTATION	WEIGHT
UC-14VM	VERTICAL	2.5 LBS
UC-14HM	HORIZONTAL	2.75 LBS



See Page 22 for Product Disclaimer and Usage Information.



For metric specifications, visit our product pages on www.dicausa.com

Wheel Chock Features

Safe, Durable, Compact and Easy to Use.

Checkers Warranty

Free from defect in material or craftsmanship for one year.

Contact Us

800.610.3422 TOLL FREE www.dicausa.com WEB
641.755.4810 FAX info@dicausa.com EMAIL

Roadblocks



UNIVERSAL DUAL MOUNTING BRACKET

1200 SERIES MODEL

Truck Mounted Cranes and Tire Sizes Up To (105")

PRODUCT	(W X L X H)	WEIGHT
MC-1210	14" X 17" X 14"	25 LBS

1200 SERIES MOUNTING BRACKETS - ZINC PLATED

PRODUCT	ORIENTATION	WEIGHT
MC-1900	UNIVERSAL DUAL	16 LBS

PRODUCT STANDARDS

- Durable Rubber Construction
- Resistant to the Elements
- Steel Loop or Eyelet Handle
- Fits Most Storage Compartments



450 SERIES MODEL

Utilities & Telephone Fleets

PRODUCT	(W X L X H)	WEIGHT
RC-450	8.0" X 10.0" X 5.5"	7.0 LBS
RC-450S	8.0" X 10.0" X 5.5"	10.0 LBS
RC-450CL	8.0" X 10.0" X 5.5"	9.0 LBS



815 SERIES MODEL

OTR Trucks and Trailers

PRODUCT	(W X L X H)	WEIGHT
RC-815	8.0" X 10.0" X 6.0"	8.5 LBS



See Page 22 for Product Disclaimer and Usage Information.



For metric specifications, visit our product pages on www.dicausa.com

High Features
Safety, Durability, and Recovery
Easy to Store

100% Satisfaction Guarantee
Free of charge replacement
Guaranteed for one year.

Contact Us
800.610.3422 TOLL FREE
641.755.4810 FAX
www.dicausa.com WEB
info@dicausa.com EMAIL

Product DISCLAIMER & GUIDELINES

Product Disclaimer

Anyone considering the use of these products should thoroughly test them to ensure that they satisfy their specific needs. Manufacturer and/or Distributor cannot guarantee performance of these products because usage or application of buyers cannot be controlled by either the Manufacturer and/or Distributor. Proper Use requires the selection of the proper products for the equipment and the specific application. Manufacturer and/or distributor expressly disclaim any and all warranties not set forth herein, including any warrant of fitness for a particular purpose and/or any warranty of merchantability which might otherwise be applicable. In the event of a manufacturing defect, buyer's remedy shall be strictly limited to a refund of the purchased price or replacement of the product. **Buyers specifically acknowledges waivers of any claim against either manufacturer or any distributor regarding consequential damages to person or property, damages for loss of use, lost time, loss of profit, lost income, or other incidental or consequential damage.** All prices, designs and/ or specifications are subject to change without notice.

Safety Tech™ Outrigger Pads

USAGE AND PROPER HANDLING

- Outrigger foot pads must be smooth and have a minimum of 80 sq. in. of surface area.
- Disturbed soil conditions may require additional blocking, cribbing or stacking of pads to ensure rigidity, stability and safety.
- Designed for 1-4 person carry. Handle quantities and locations are provided for safe lifting and handling.
- For maximum performance and safe operation, position outrigger foot in center of pad.
- Alternate the use of pad surfaces to maximize memory recovery.
- Acceptable operating temperature range is -40° to 180° F and -40° to 82.22° C.

AlturnaMATS® and VersaMATS

USAGE AND PROPER HANDLING

- Do not use mats as outrigger pads or debris landing mats.
- Minimize grass brown outs by removing mats when not in use.
- Avoid bridging and do not span voids.
- Use mats on stable ground for ground cover and traction assistance only.

Checkers® Industrial Wheel Chocks

USAGE AND PROPER HANDLING

- Select wheel chock according to tire size and vehicle type.
- Chock in direction of grade.
- Chock both sides of wheel if direction of grade is undetermined.
- Use only after parking brake is applied and tested.
- Center chocks snugly and squarely against tread of each wheel.
- Always test chocks to insure they meet requirements.
- Do not drive over wheel chocks.
- Always use in pairs and on firm surfaces



Kerry Koberg

Sales Manager

kerry@dicausa.com

800.610.3422 **TOLL FREE**

303.777.0729 **DIRECT**

641.755.4810 **FAX**

720.771.2423 **MOBILE**

P.O. Box 188

504 West Market St.

Panora, IA 50216

www.dicausa.com





PO Box 188
Panora IA 50216

800.610.3422 **TOLL FREE**
641.755.4800 **DIRECT**
641.755.4810 **FAX**

www.dicausa.com